



**SLD1768(WT)**

**17" TFT LCD Display, LED Backlight, 1600nits, SXGA(1280x1024)**

17" TFT LCD panel, built-in 1600 nits high bright for sunlight readable LCD display, high transmittance color filter, high transmission polarizing plates, Low Power Consumption, suitable for kiosk, advertising, POS, marine, transportation, gaming, studio display, gas pump.

**Key Features**

- Sunlight Readable
- LED Backlight
- SXGA(1280x1024) High Definition
- High Shock & Vibration Resistance
- Low Power Consumption
- High Uniformity
- Low EMI Noise
- Wide Dimming
- Wide Operation temperature
- Life Expectancy
- Smart Panel design. The thickness is only 35.9mm



**Specifications**

V2

<b>Model No.</b>	SLD1768(WT)
<b>Description</b>	17" TFT LCD Display, LED Backlight, 1600nits, SXGA(1280x1024)
<b>Display Area (mm)</b>	337.9(H) x 270.3 mm
<b>Brightness</b>	1600 cd/m <sup>2</sup>
<b>Resolution</b>	1280x1024 (SXGA)
<b>Contrast Ratio</b>	1000 : 1
<b>Pixel Pitch (mm)</b>	0.264(H) x 0.264(V)
<b>Viewing Angle</b>	+85°~ -85°(H), +80°~ -80°(V)
<b>Display Colors</b>	16.7M
<b>Response Time (Typical)</b>	30ms
<b>Power Consumption</b>	36.55W
<b>Dimensions (mm)</b>	358.5x297.3x35.9mm
<b>Weight (Net)</b>	2.5kg
<b>LED Driving Board</b>	LID17A09
<b>Control Board (Optional)</b>	<input type="checkbox"/> AD2662GDVAR
<input type="checkbox"/> AD2662GDVAR	VGA+DVI (Optional S-Video/ Component / Audio)
<b>F / R Control Button</b>	<input type="checkbox"/> 5 Key <input type="checkbox"/> 4 Key
<input type="checkbox"/> 5 Key	Power Switch, Menu, Select (+,-), Auto
<input type="checkbox"/> 4 Key	Power Switch, Menu, Select (+,-),
<b>OSD Menu</b>	Brightness, Contrast, H/V Position, Color, Phase, Clock...
<b>Optional</b>	<input type="checkbox"/> AOT <input type="checkbox"/> Touch Screen

Specifications are subject to change without notice.

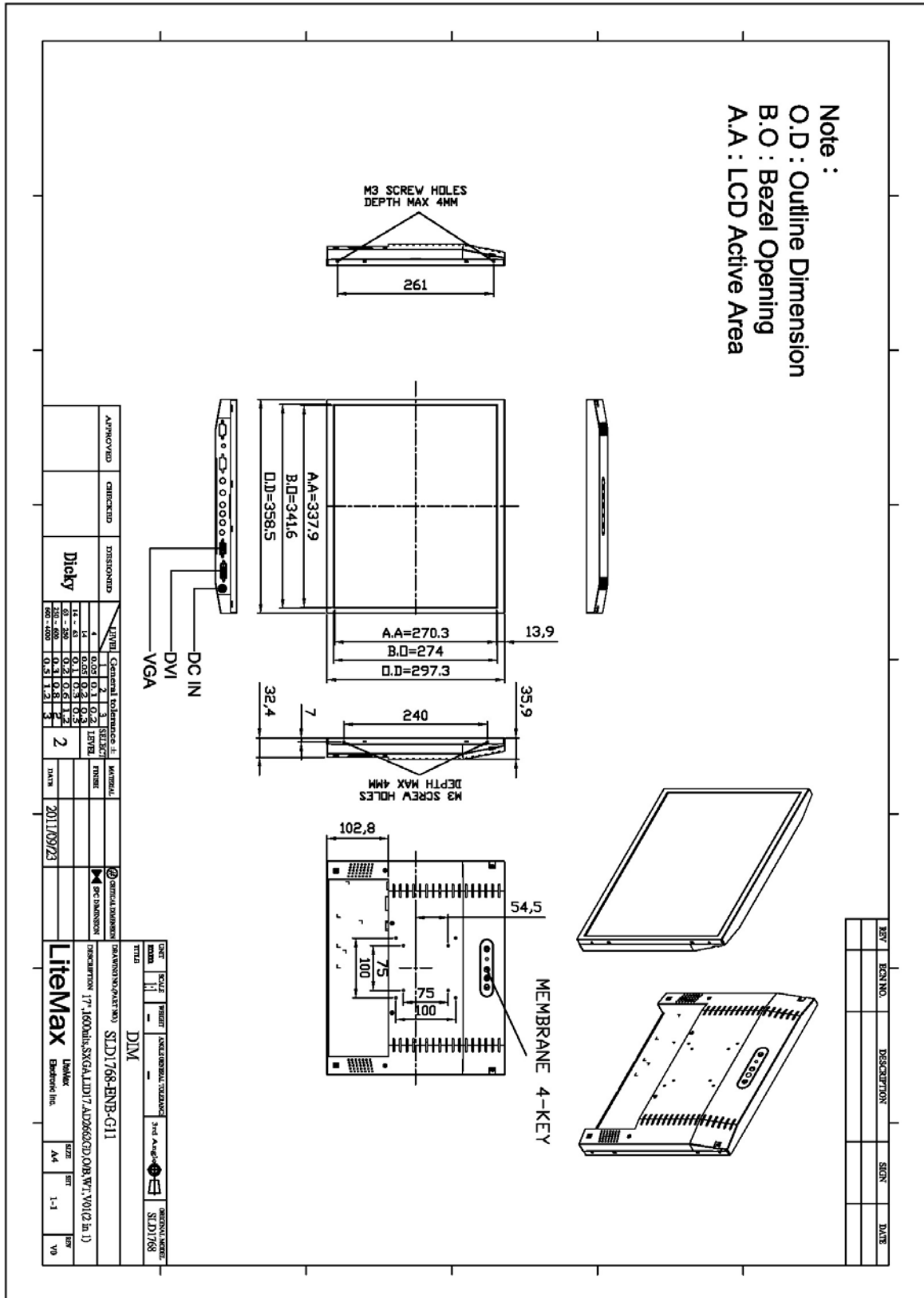
All brands or product names are trademarks or registered trademarks of their respective companies.



# Mechanical Drawing

## Outline Dimensions

Unit:mm





### Ordering Information

Part Number	Description
SLD1768-ENB-G11	17",1600nits,SXGA,LID17.AD2662GD,O/B,WT,V01(2 in 1)
SLD1768-ENB-G12	17",1600nits,SXGA,LID17.AD2662GD,O/B,WT,V01

### Optional Accessories

Part Number	Description
840612051210	ADAPTER,AC/DC,12V/5.4A,65W,Atech OEM A065112-TDx.4P SLIDING CAP,P
<b>810618301010</b>	CABLE.POWER.AC.1830mm USA type
<b>810618301090</b>	CABLE,POWER,AC,1830mm Europe type
<b>810618301050</b>	CABLE.POWER.AC.1830mm UK type
<b>810618301170</b>	CABLE.POWER,AC,1830mm Australia type
<b>810618301030</b>	CABLE.POWER.AC.1830mm Japan type